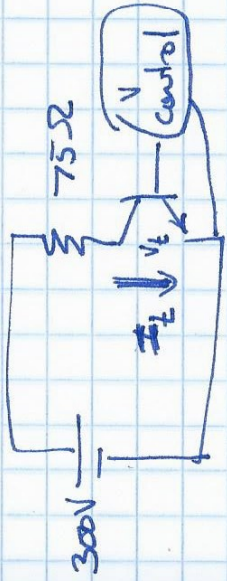


Classwork / Homework

Same transistor, different ~~load~~ load



Keep as similar as possible

$$t_{\text{ton}} = 150 \text{ ns}$$

$$t_{\text{toff}} = 300 \text{ ns}$$

use V, I relationship

for resistor to make

- I_c, V_c curves (assume linear) and P_c vs t_c .

- find $\langle P \rangle$ @ 100 kHz

- compare w/ result from class (simplified Buck)

Can be done in group (size 1-3 people)

time in class to work through.

Each group must turn in write-up.

Due 9/9